

**ES Series****Economy Style Doors**

**Doors** are ideally suited for new installations or for remodeling in masonry, tile, wood or other wall and ceiling surfaces. Door features rounded safety corners.

**Door and Frame** are fabricated from 16 gage, galvanized steel with a prime coat white finish.

**Frame** is one piece construction, 1" wide and provides perfect concealment of the rough wall opening. Wall frame is provided with 1/4" mounting holes for fastening within the furred spaces allowing faster installation and fixing maximum clearance.

**Concealed Pivoting Rod Hinge** prevents distortion and closes door squarely. The 24" x 24" door is provided with a continuous piano hinge.

**Latch** is screwdriver operated.

**Finish** is a prime coat white.

**Guide Specification**

Provide Elmdor® ES Series, Dry Wall Access Doors (Specify model number and options.) Access door and frame shall be fabricated from 16 gage, galvanized steel with a prime coat white finish. The door shall have rounded safety corners and a concealed pivoting rod hinge. Frame shall be one piece construction with no mitres or welds on the face. Latch shall be screwdriver operated. Finish shall be a prime coat white.



Member of U.S. Green  
Building Council

**ES**

02/24/16

Recyclable  
Product

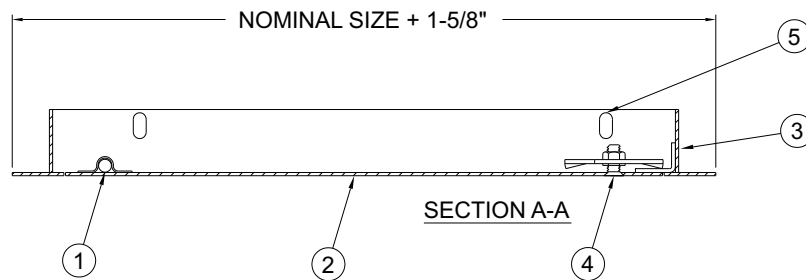


**STANDARD AVAILABLE SIZES**

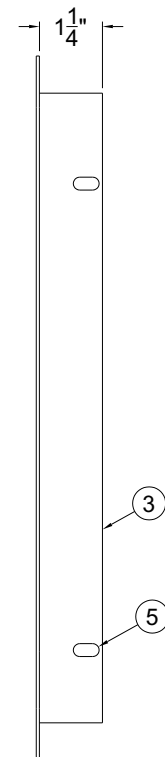
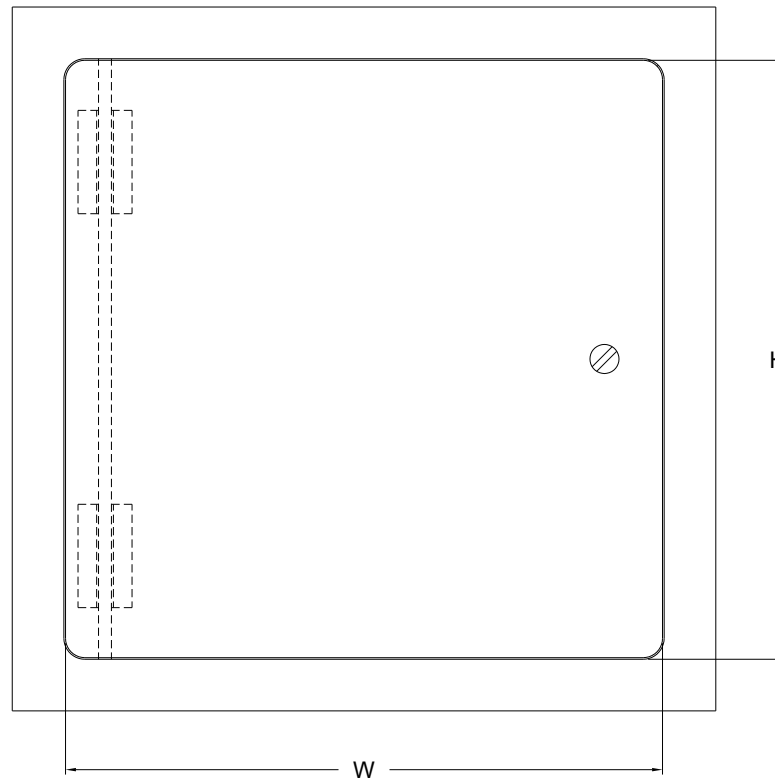
Special sizes available upon request.

**NOMINAL DOOR**
**SIZE (W X H)**

<u>INCHES</u>	<u>WALL OPENING</u>	<u>LATCHES</u>	<u>LBS.</u>
ES 6" x 6"	6-1/2" x 6-1/2"	1	3 lbs.
ES 8" x 8"	8-1/2" x 8-1/2"	1	3 lbs.
ES 10" x 10"	10-1/2" x 10-1/2"	1	4 lbs.
ES 12" x 12"	12-1/2" x 12-1/2"	1	5.5 lbs.
ES 14" x 14"	14-1/2" x 14-1/2"	1	6 lbs.
ES 16" x 16"	16-1/2" x 16-1/2"	1	7.5 lbs.
ES 18" x 18"	18-1/2" x 18-1/2"	3	9 lbs.
ES 20" x 20"	20-1/2" x 20-1/2"	3	11 lbs.
ES 22" x 22"	22-1/2" x 22-1/2"	3	12 lbs.
ES 24" x 24"	24-1/2" x 24-1/2"	3	15 lbs.


**NOTES:**

1. CONCEALED PIVOTING ROD HINGE
2. DOOR
3. FRAME
4. SCREWDRIVER OPERATED LATCH
5. MOUNTING HOLES



Dimensions are subject to manufacturer's tolerance of plus or minus 1/4". Elmdor/Stoneman assumes no responsibility for use of void or suspended data. Please visit [www.elmdorstoneman.com](http://www.elmdorstoneman.com) for most current specifications. © Copyright 2009 Elmdor/Stoneman, City of Industry, CA, A Division of Acorn Engineering Company.

**SELECTION SUMMARY & APPROVAL FOR MANUFACTURING**

Model Number & Options \_\_\_\_\_ Quantity \_\_\_\_\_  
 Company \_\_\_\_\_ Date \_\_\_\_\_  
 Contact \_\_\_\_\_ Title \_\_\_\_\_  
 Approval for Manufacturing/Signature \_\_\_\_\_

**ES**

02/24/16